



Our Town

HAPPY THANKSGIVING!



Tip O' Texas Resort
101 East Sioux Road
Pharr, Texas 78577

TOT BUSINESS OFFICE

Park Manager
Al & Sue Seprion

956-787-9959

Monday-Saturday

8:00 A.M.—5:00 P.M.

Sunday

Noon—4:00 P.M.

Welcome Center 24/7

957-787-3727

Office Fax

956-787-4905

Office Manager

Ed Brown

~Office Staff~

Eva Sosa

Jesse Magdeleno

Frankie Myers

Shujen McMurray

Theresa and Johnny Desjardins

Work Kampers

J.D. Myers

Bonnie & Dick Lynch

Bernie & Kay Schaaf

Activity Directors

Steve & Trish Moore

956-787-6461

Monday-Friday

9:00 A.M.—3:00 P.M.

activitiesoffice@tipotexarv.com

OUR ADVERTISERS

American Discount Hearing	22
Bath Time Dog Salon	23
Charisma Construction	22
Flores Optical	25
Galvan Insurance Agency, Inc.	27
Hess Air, Inc.	26
J ' s Traveling Massage	28
Jackson Pest Control	25
Jerry ' s Com. Ref and A/C	25
Mancha Insurance Agency	23
Martin Chiropractic	26
Marquez Dental	23
McAllen Stained Glass	23
Mr. Mobile Home	24
Mustre Dental Clinic	26
Packaging Store	22
Pest Lab	25
RV Service Center	28
Sky Med	23
Stanley Steemer	25
Valley Animal Hospital	23
Windshields Xpress	28
Winter Texas Home Sales	22

Notes From the Main Office

Welcome friends and neighbors. We are happy to have you back!

Newcomers, a very warm welcome! If you have not had your picture taken for our Newcomers Bulletin Board in the main hallway, please stop by the office so we can take a photo of you to post.

As you may have noticed, our staff was busy this past summer getting the park ready for this upcoming season. Our big project was the plastering of the Outdoor pool; all of the water was drained for cleaning. The outdoor pool deck along with the indoor pool deck were painted. Take a peek into the newly painted laundry room! Both restrooms by the outdoor pool have new coats of paint as well as the hobby shop. You might also notice the new fencing around the outdoor pool area and more streets were blacktopped. Most of the outside square of the park has been resurfaced, so you walkers and bikers will have nice streets this season to log in plenty of miles.

Again, we must emphasize the SPEEDING in the Resort. Please SLOW down as 15 mph is our maximum speed limit. Please obey it both with the car and with your golf carts.

Golf carts are to be driven on the streets, not on the side walks around the complex. The sidewalks are for pedestrians only, no 3-wheeled bikes or golf carts are permitted. You may notice plants strategically placed on the sidewalks. We don't want anyone to be injured.

Thank you, everyone, for helping us make this the best and the safest season yet!

From the Office Staff,

Al, Sue, Ed, Eva, Jesse, Frankie,
Shujen, John, and Theresa

Notes from the Activity Office

The season has begun! Steve and I are in full swing as your new Activity Directors.

We also want to include a special thank you to all our volunteers. We have a lot of activities planned, and we are hoping our enthusiasm for the job generates a busy but enjoyable season for everyone. Our volunteers make it all happen, so be a part of our life here at the Tip.

Please come and check out the Activity offices located by the stage on the east end of the main hall. The offices will be open daily M-F 9 A.M. to 3. A.M. All tickets for all events will be sold in the Activity office. Our door is always open, and we are anxious to greet you and help you in any way.

We are featuring **Happy Hours** on Mondays and Fridays from 4:00 to 5:30 P.M. Mondays we will be serving hot dogs, brats, Polish sausage, chips and soda for a great price with our own Johnny D providing the entertainment by donation. Fridays we will be serving hamburgers, fries, chips and soda with Steven May entertaining for donations. Steve is the lead guitarist and singer for the Bottom Line Band. Come and enjoy a fun time with friends—dance, eat, or just listen to the great music.

Steve and

Trish Moore

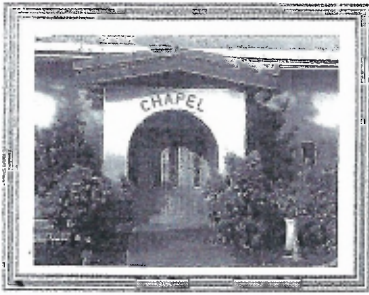


Tai Chi (*tie chee*) will be starting this fall. It is a low impact way to reduce stress. It will meet Mondays at 10:00 (or after MMM) and Tuesdays and Thursdays at 9:00 in the Main Hall.

At the Wednesday night dances we are expanding the menu. Besides hot dogs, we will also feature a Mexican fiesta of tacos, nachos, taco salad, and burritos. The kitchen will open at 5:00pm so that those who do not want to attend the dance can still enjoy a good evening meal. Best of all, our Bottom Line Band will be performing every Wednesday night! Come on out and enjoy the evening!

There is a Suggestion Box in the main hall. Please, if you have any comments, ideas on improvements or entertainment, please write them out and slip them into the box. However, our office is always open for conversation.

We are hoping to have a successful and fun year with all of you.



Chapel Commentaries

Memorial List 2017

August "Gus" Stremel	Jan 12
Peggy Metcalf	Jan 21
Ruth Hutchinson	Feb 16
Betty Ann Burrows	Feb 20
Carroll E. Titemore	Feb 20
Sarah Craig	Mar 22
Don Wilder	Apr 14
Wiley Hutchinson	Jun 03
Phil Coulter	Jun 09
Hartley Wayne Brown	Jul 14
Vivian Dannewitz Eiler	Jul 15
Joseph J Fedorczyk, Jr.	Aug 13
Peggy Becker	Aug 29

WE WANT YOU!

The chapel choir would like you to join us on Thursday afternoons at 3:30 when we rehearse the music to present to the Village Chapel worship services. We strive for a good presentation, not perfection. Our hearts' desire is to make a "joyful noise unto the Lord." Benefits of singing with the choir are the fellowship with other believers and the joy of rehearsing songs that are old favorites as well as a few newer arrangements. I'll look forward to seeing you. Questions? Contact Floy Slavik-Kilgore at 402-981-3000 or stop by Lot 750.

The Village Chapel church services will begin on November 5th at 9:00 a.m. We will begin the season with special guests Eloise and Roland Whittaker. Eloise will play beautiful sacred music on her marimba and will be accompanied by her husband Roland on bass. Eloise is the music director at Casa Del Valle and is a very talented musician. Be sure to attend so you will not miss her masterful renditions of some favorite hymns.

We are looking forward to seeing those who faithfully have attended the Village Chapel, and we would like to invite the rest of you to experience our services. We sing your favorite hymns, listen to the choir (come join it!), and use video projected texts of the sermons to keep you engaged in the messages. A coffee and donut fellowship time immediately follows the service. All this begins a lovely Sunday morning at the Tip!

As we begin the season, we would like to schedule the greeters and ushers. These are easy ways to serve the Lord, so step up and welcome your friends to the service. Not busy Saturday nights at 9:00? Help us set up chairs in the hall. Many hands make light work and it doesn't take very long to get the job done.

Be sure to check the Village Chapel bulletin board at the back of the hall to keep up on the church activities. We hope to have some special events this season, so stay tuned!

See you in church!

Chuck Strandberg

One particular four-year-old prayed, 'And forgive us our trash baskets as we forgive those who put trash in our baskets.'

Love is the Most Important Word



One of the most important words used in Scripture is Love. Paul mentions three words in 1 Cor. 13: faith, hope and love, but the greatest of these is Love. Love is what holds people together. Hate tears people apart. In our world today, we are witnessing that Love is losing out.

The two words used in the Bible for Love are “agapao and phileo,” Phileo love is sharing love. It’s a love that demands a favorable response. I phileo you if you phileo me back. Phileo is used in a compound word with money—money-lover; with self—self-lover; and with pleasure—pleasure-lover. This means that there are things in this world that we can phileo more than we agapao God. (1 John 2:15:) Phileo love is an emotional love.

Agapao love is the more important Love. It is an unselfish and sacrificing Love. It’s a Love that does not expect a returning favor. It’s a Love of the will and has the welfare of its recipient in mind. Agapao Love is from God. It’s given to the person who makes a proper response to God’s agapao Love. We love Him because He first loved us.

We see the use of these two loves in John 21:15-17. After Peter’s three denials of Jesus, after Jesus’ resurrection, and after Peter was filled with many doubts of his future, he and the other apostles decided to go fishing, but caught nothing. Jesus stood on the sea shore waiting for the defeated apostles.

Jesus asks Peter if he loved (agapao) Him more than these? And Peter’s response was that Jesus knows that he loves (phileo) Him. Then Jesus gives Peter a command. Then Jesus asks Peter a second time if he loved (agapao) Him. Peter’s second response was that he loved (phileo) Him. Note that Peter could not bring himself to say he (agapao) loved Jesus. Then Jesus asked Peter a third time, Do you love (phileo) me? This disturbed Peter. Jesus seemed to imply He wanted Peter to make sure Jesus was still His friend.

Jesus still trusted Peter to carry out his apostleship because he told him to shepherd His sheep and lambs. Peter certainly showed his agapao Love on the Day of Pentacost and later as he risked his life for Jesus.